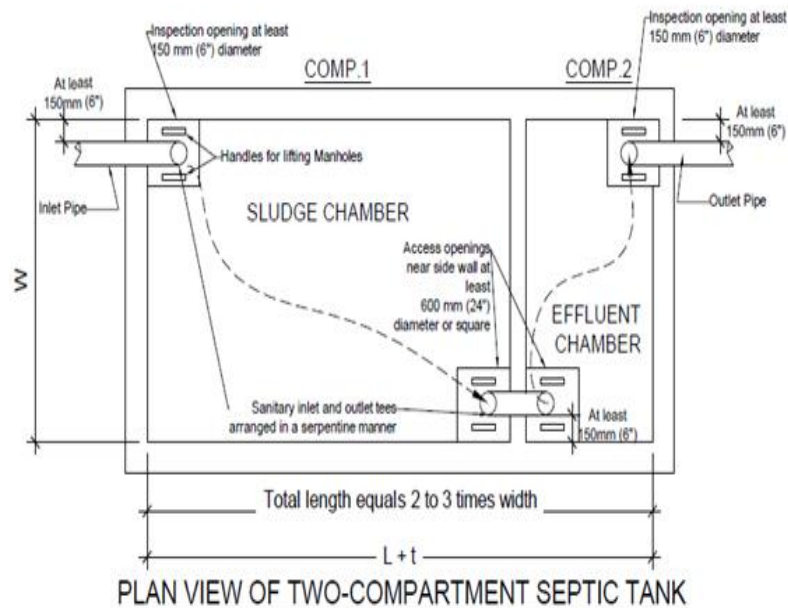


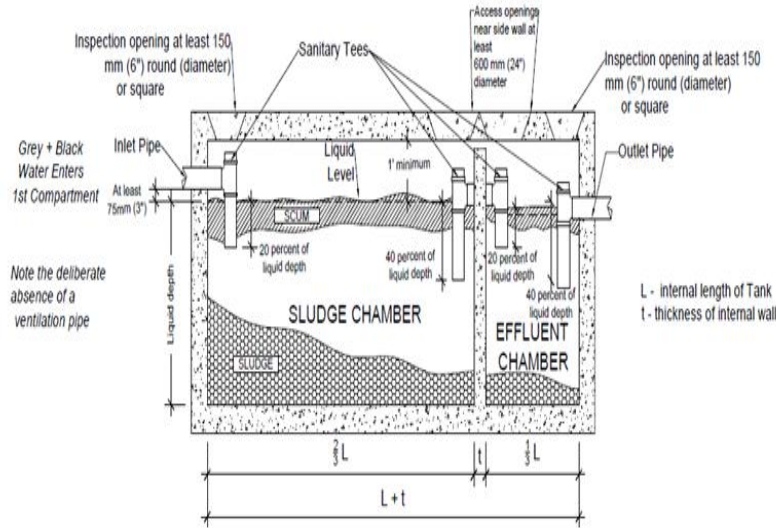
MINIMUM SEPTIC TANK DIMENSIONS

Number of bedrooms in dwelling	Max. no. of persons served	Nominal liquid capacity (US gal.)	Recommended dimensions		
			Liquid Depth	Internal Length	Internal Width
2	4	810	4' - 0"	9' - 0"	3' - 0"
3	6	1,440	4' - 0"	12' - 0"	4' - 0"
4	8	1,690	4' - 0"	13' - 0"	4' - 4"
5	10	2,025	4' - 0"	14' - 0"	4' - 8"
6	12	2,560	4' - 0"	16' - 0"	5' - 4"

PLAN VIEW OF TWO COMPARTMENT

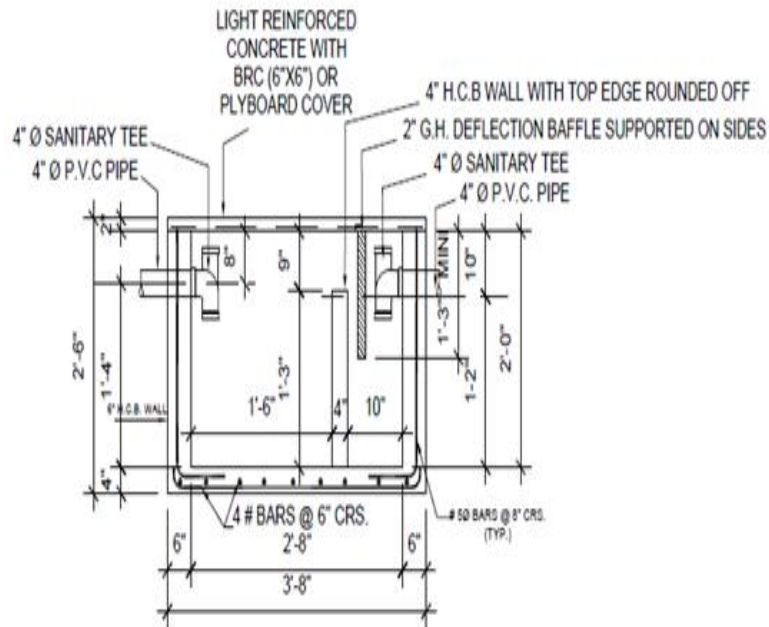


SECTION OF A TWO-COMPARTMENT SEPTIC

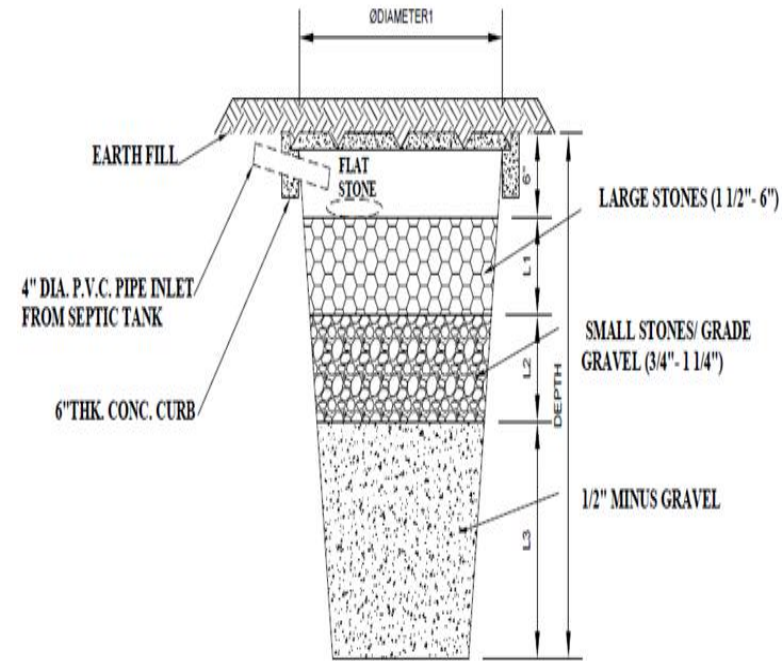


SECTION OF TWO-COMPARTMENT SEPTIC TANK

GREASE TRAP

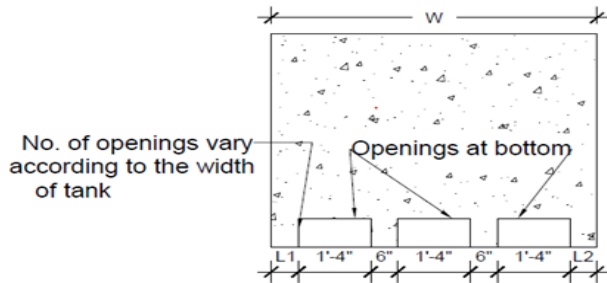
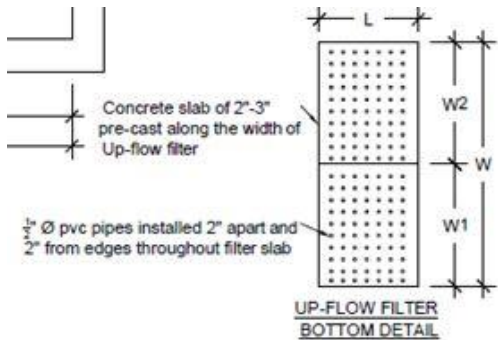
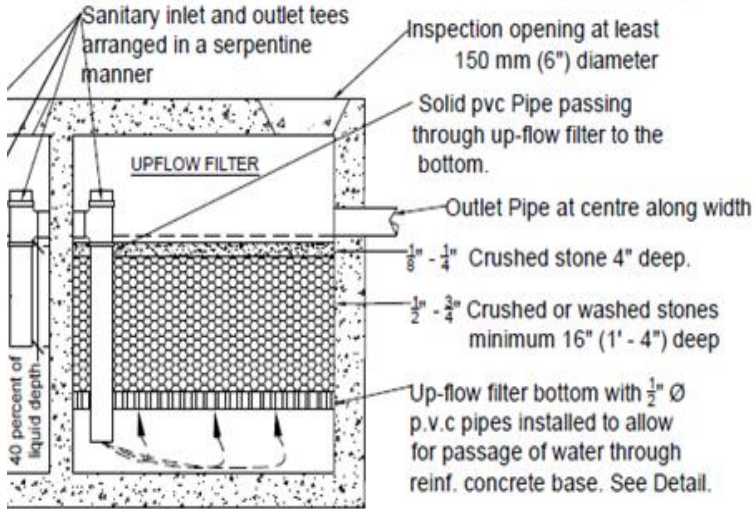


SOAK-AWAY SYSTEM



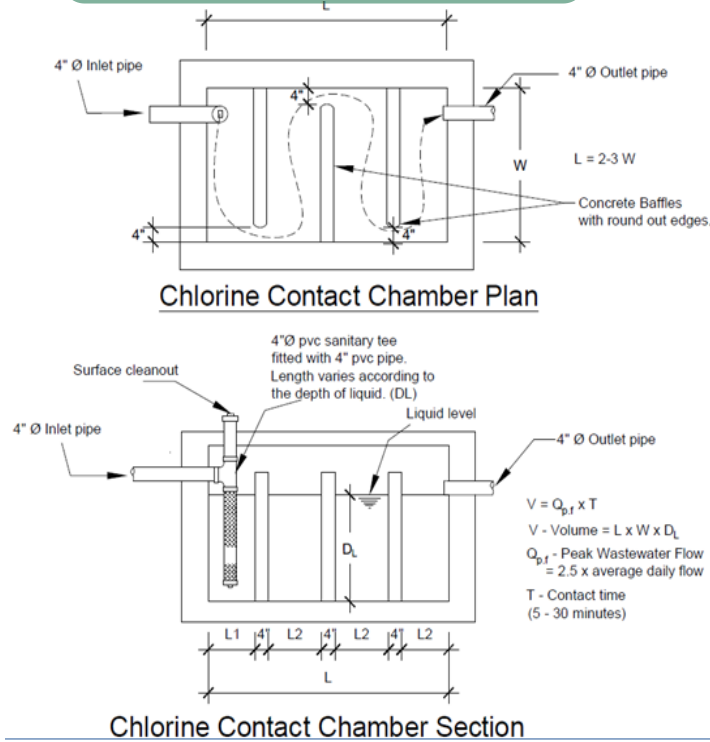
- Before construction, all designs must be submitted to DCA for APPROVAL.

UP-FLOW FILTER



WALL DETAIL OF OPENINGS TO UP-FLOW FILTER OPTION 1

CHLORINATION CHAMBER



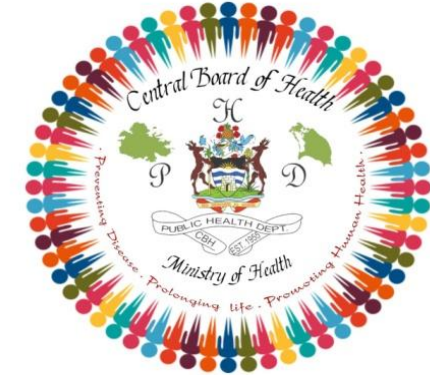
**Please note that the type and size of the systems depends on the rates from the percolation test.*

Central Board of Health
 Lower All Saints Road
 St. John's, Antigua
 Tel#: (268) 462-2936
 Tel#: (268) 462-0331
 Fax#: (268) 460-5992

Email: chi_cbheh@yahoo.com

 [centralboardofhealthantiguaandbarbuda](https://www.facebook.com/centralboardofhealthantiguaandbarbuda)

Ministry of Health
 Central Board of Health



Requirements
 For Onsite Wastewater
 Disposal Systems